

*Cleaning Technology · Municipal Technology*

**Hako**  
*Clean ahead*



## ***Multicar M29***

***The compact multi-talent***

*365 days, countless applications – one vehicle!*



**Citymaster 2200:**  
**Powerful sweeping talent**  
 Efficient, safe and flexible city cleaning – with a 2- or 3-broom system and a genuine dirt hopper capacity of 2 m<sup>3</sup>.



**All seasons flexibly under control**

Sweeping in the spring. Mowing in the summer. Leaf-blowing in autumn. Snow-ploughing in the winter. The application options of the Multicar M29 are virtually unlimited. Thanks to its modular concept, the vehicle is extremely flexible and can be used for a wide range of applications, especially in situations where manoeuvrability and a compact design are called for.

In the municipal sector as much as in gardening & landscaping and in waste management. A genuine all-rounder – characterised by one thing above all: economically efficient working. And with its top speed of 62 km/h this Multicar quickly reaches the next job site!



Developed and manufactured in Germany – Quality "Made in Germany"!

Flexible design as a standard: The quick-change systems of the Multicar M29. In the picture: heavy-duty attachment plate for front attachments.

**Multicar M29:**  
**The powerful multi-talent for both urban and rural areas**

Whether cleaning city areas or maintaining green areas in parks or at cemeteries: The Multicar M29 is the optimal vehicle for working in confined spaces. With a width of only 1.32 metres, the multi-talent can access even narrow streets or service roads - with a payload of up to 3.2 tons!





Finding the right seating position for every driver: Air-sprung comfort seats with adjustment for weight, reach, backrest and angle of inclination.

### Optimal comfort

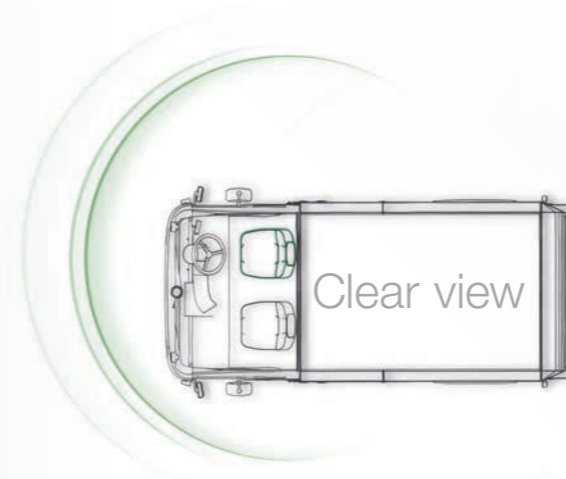
Perfect working conditions for the driver: With large low-slung windows for an optimal panoramic view onto the road and the traffic as well as the front attachments. The air conditioning ensures pleasant cockpit temperatures – all year round. Moreover, the cabin has been designed to provide noise insulation and protect the driver.

#### Back-friendly working: Recommended by experts

The workplace in the cabin of the Multicar M29 is particularly back-friendly. The many advantages of the Multicar M29 include easy entering and exiting, the ergonomic seat with individual adjustment options to find the most comfortable seating position and the state-of-the-art chassis that reduces jolts and vibrations significantly.



Saving time: With its top speed of 62 km/h the Multicar M29 can even use motorways and express ways – which reduces travel times from one job site to the next significantly.



Perfect all-round view: Large windows at the front and side as well as an additional rear window and large wing mirrors ensure that obstacles are detected early to prevent collisions.



Ease of operation: Both the hydrostatic drive and attachment functions are operated centrally via joystick.



The functions of the Multicar M29: Complete overview, easy to operate – also in drive mode. Working in the vehicle is both comfortable and safe.

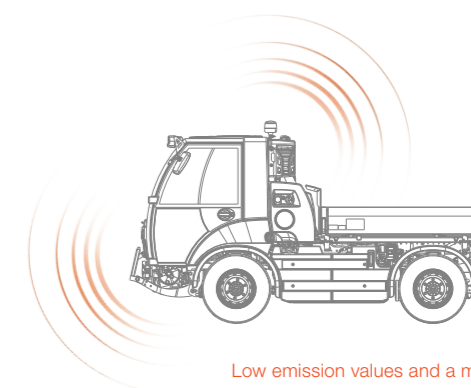
Variable hydrostatic braking power as a standard – for more comfort and safety.

#### Small turning circle for big tasks

Making a complete U-turn in the smallest of spaces – thanks to the all-wheel steering: With its turning circle of only 3.25 m, the Multicar M29 is the perfect vehicle for working in confined areas.

#### All functions at a glance. Also in operating mode!

Clearly structured: The vehicle's operating elements are ergonomically designed to ensure easy operation of all functions and just as easy changing of attachments!



Low emission values and a minimum noise level during operation: The Multicar M29 can even work in environmental zones and other sensitive areas.



Superstructures

Rear attachments and trailers

Front attachments and tools

Flexible application with suitable attachments.

Attachment triangle for front attachments with sufficient room for the suction hose.

**One for All**  
Go Multifunctional

**Unlimited range of application possibilities**

From gritter superstructures to lifting platforms: There is hardly anything the Multicar M29 can't do, making it the perfect implement carrier for a wide range of applications: From transportation to working in agriculture, from municipal applications such as cleaning traffic areas and maintaining green areas or as an implement carrier for special hydraulic tools. The vehicle's portfolio currently comprises 98 attachments and superstructures for variable use. What are your individual requirements in your business?



Ground's maintenance



Sweeping



Winter service



Wet cleaning



Waste management



Transportation



Road maintenance



Special applications



Viticulture/fruit growing



The basic unit for a wide range of applications: Three interfaces at the quick-change system for close to 100 customised tools that can be changed and fitted with ease.

**Modular concept – for more flexibility**

Front attachments and superstructures, rear attachments or trailers: The modular concept of the Multicar M29 has been designed for a large number of applications with a wide range of different attachments, allowing particularly economically efficient working of the vehicle in situations where multifunctional use is a main factor.



Increased payload through quick-mounting of the attachments directly onto the chassis.



There are many different options when it comes to removing foliage in autumn. The Multicar M29 uses them all – thanks to the wide range of quick-change attachments available.

**Increased thrust power when the going gets tough.**

The infinitely variable hydrostatic drive is additionally mechanically assisted – to help adapt the working speed to the tasks at hand and provide power reserves when working uphill, so that inclines are nothing to worry about any more.

**Sweeping, leaf blowing, winter service – prepared for all tasks associated with autumn**

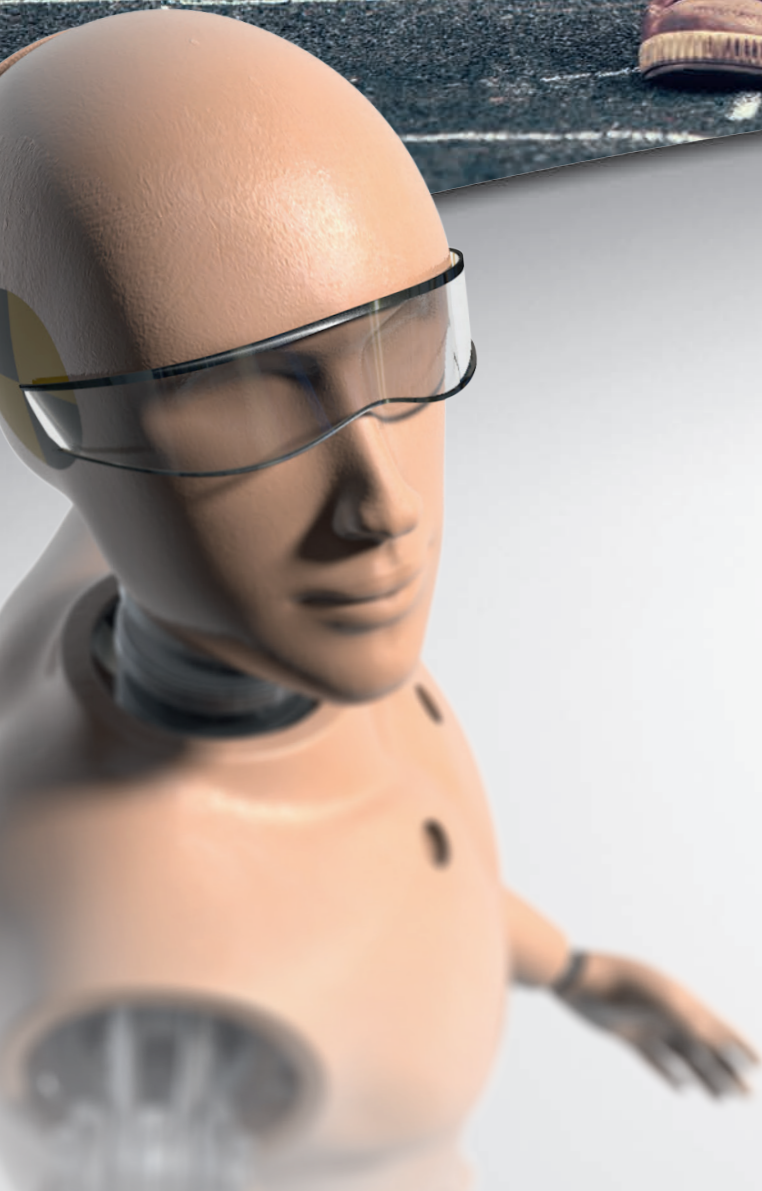
The Multicar M29 is well prepared to expect hard work when taking a trip to the countryside: The vehicle has the capacity to suck up leaves, trim hedges, remove weeds and mow grass. And when the first snow falls in autumn, the machine can be converted into a winter service vehicle in no time at all.

**Multi-functionality without compromise**

Used as an implement carrier, the vehicle is the ideal basis for carrying out any kind of municipal cleaning or maintenance task. Given the wide range of components available, the Multicar M29 can carry out these tasks all year round: The range of equipment comprises everything from sweepers to snow ploughs so that the basic unit can be used efficiently on 365 days a year.



A number of assistance systems make work easier for the driver – for increased performance and safety.

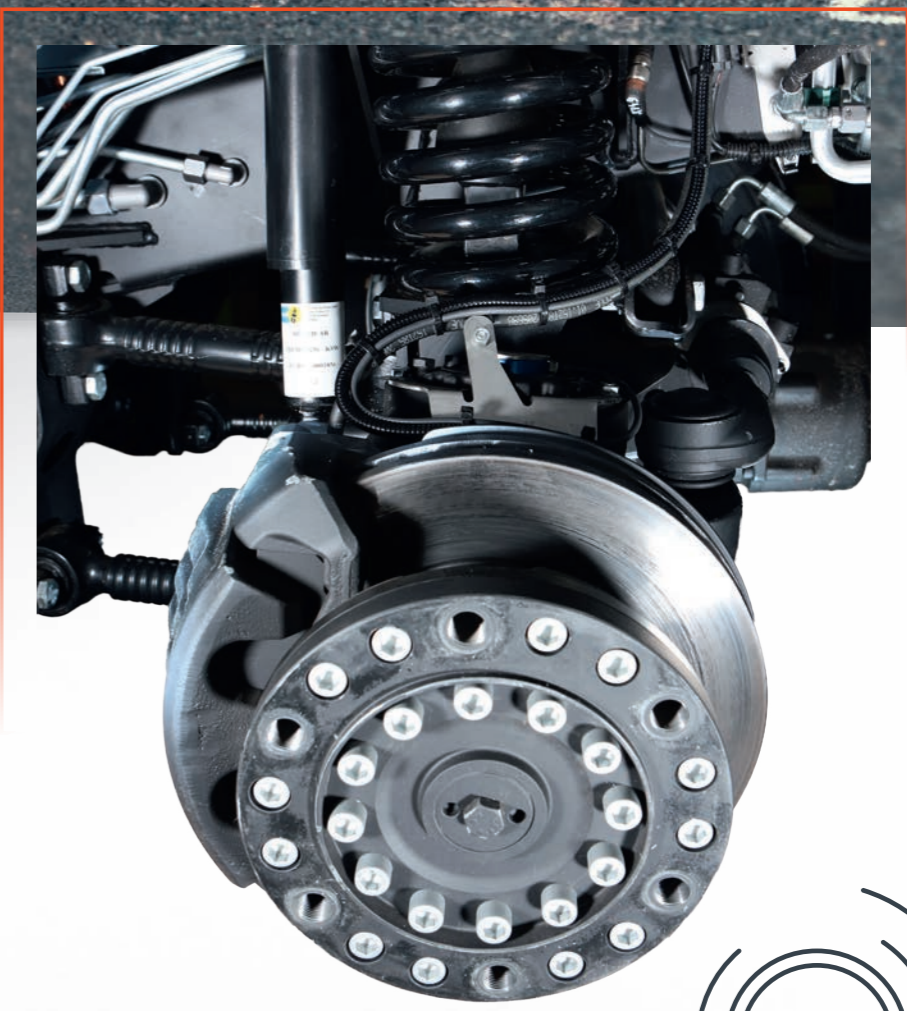
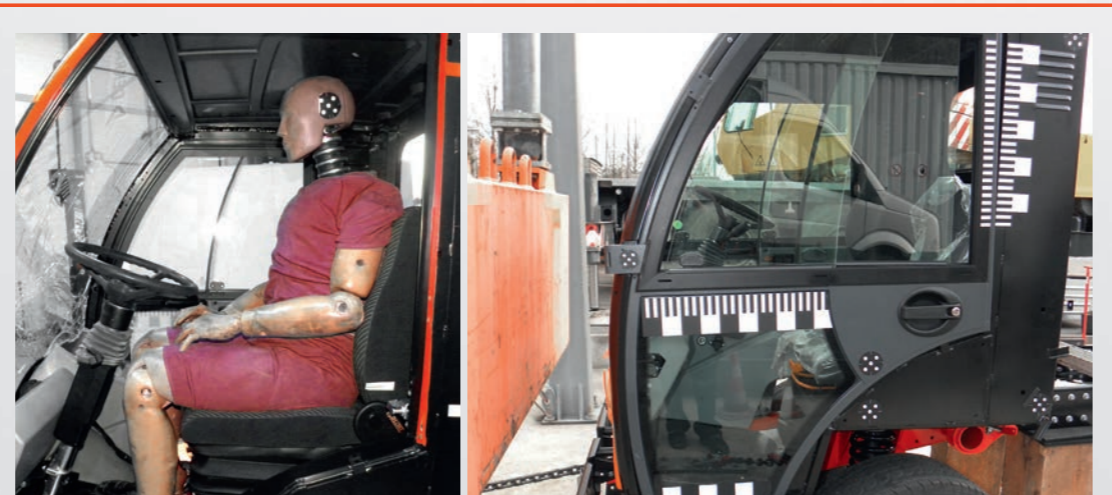


# SAFETY FIRST

## Safety standards of the highest level

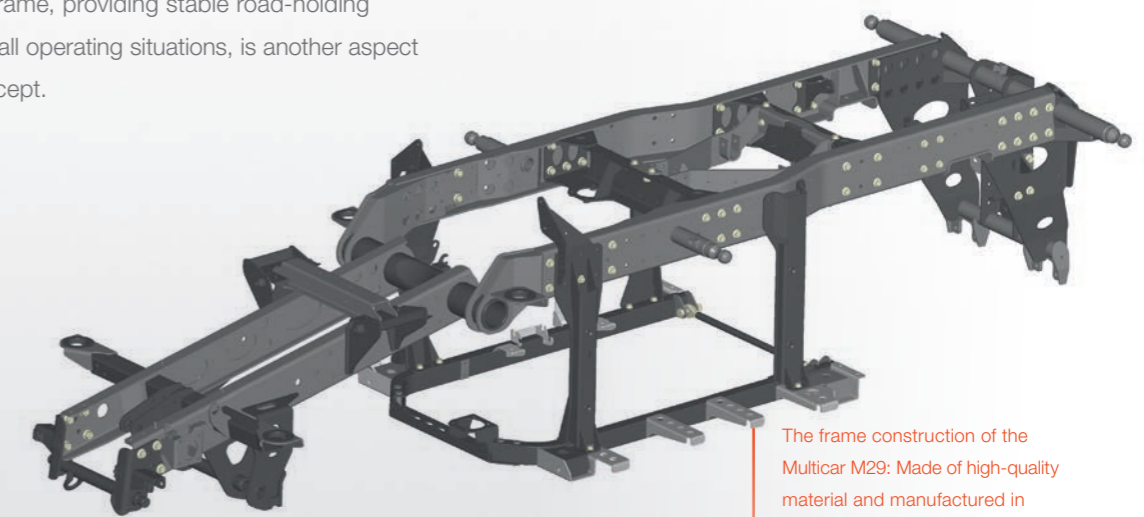
Safety starts with the vehicle concept. When developing our products, we follow the same high standards that apply in the truck construction industry, which includes all-wheel drives as well as disc brakes and an integrated hydrostatic ABS. Daytime running light as a standard, large reflectors, bright LED flashing beacon ... we do everything for the driver's safety. We attach a great deal of importance to the quality of our components in order to ensure both safety and durability. All our vehicles are thoroughly tested – based on the same criteria that applies to their 'big brothers'.

The driver's safety is very important to us. That is why we carry out safety tests according to ECE-R29 (Occupant protection) in order to ensure the highest level of safety in the cabin.



## For more safety on the road

Elaborately spring-mounted heavy-duty commercial vehicle axles 'made in Germany' provide the high payload of the Multicar M29 and ensure safe driving and operation. The heavy-duty frame, providing stable road-holding characteristics in all operating situations, is another aspect of the safety concept.



The frame construction of the Multicar M29: Made of high-quality material and manufactured in Germany, robust and stable – the basis of a safe vehicle.

**Hako**  
Clean ahead

Werkstatt



The "big plus" for maintenance work: Hako vehicles are equipped with special 4-point attachment systems that enable efficient working on the vehicle.

**We are there for you 24/7: Thanks to a close-knit sales and service network**

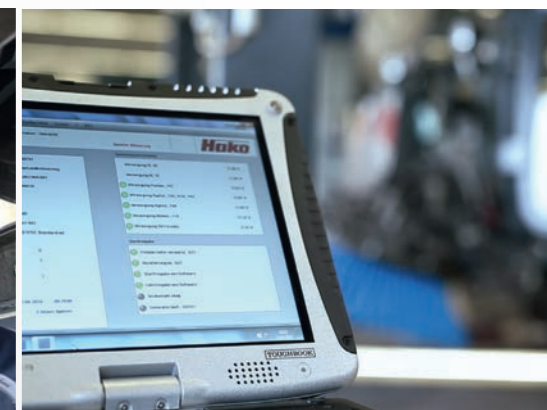
650 service technicians are available Europe-wide to provide servicing and maintenance. The close-knit service network offers one major advantage: You can be sure that the workshop of one of our service partners is in your vicinity so that necessary maintenance work can be carried out efficiently and at short notice.



Our extensive network of authorised service partners: Always close to the customer, throughout Germany.

**The experts for your vehicle**

Competent workshops with experienced service technicians carry out regular maintenance work on the vehicles. Customers benefit from the vehicle's maintenance-friendly design that helps to reduce the time spent at the workshop to a minimum.

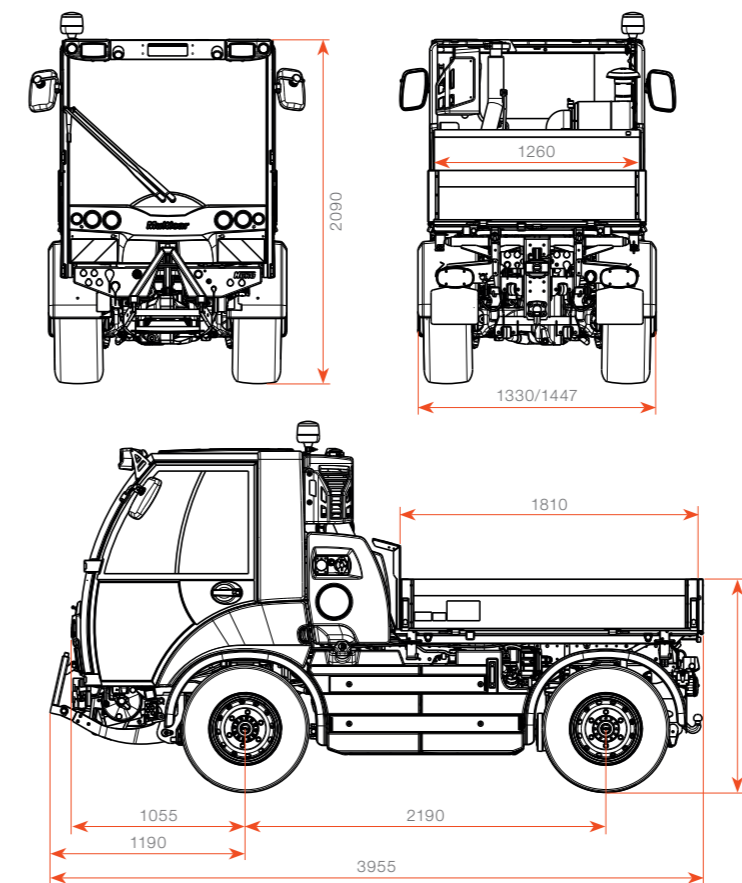


## Technical data

	Multicar M29 T	Multicar M29 C
<b>Engine and transmission</b>		
Engine	VM four-cylinder turbo diesel according to Euro VI	
Displacement/output	2,970 cm <sup>3</sup> / 80 kW (109 HP) at 2,600 rpm	
Max. torque	420 Nm at 1,100 rpm	
<b>Work characteristics</b>		
Work hydraulics	Tipper hydraulics for three-way tipper	Powerful standard hydraulics with 1 work circuit – front or rear – gear pump, 55 l/min, 200 bar Lifting/swivelling function for front attachment
Hydraulics options i.a.	Lifting/swivelling function for front attachment	2 work circuits – 1 circuit front and rear each – tandem gear pump, 2 x 55 l/min, 200 bar summation circuit (2 circuits in 1 circuit), road & path-dependent gritting via vehicle hydraulics, additional control functions
Attachment pick-up front, optional	Front lift with attachment triangle or attachment plate	
Attachment pick-up rear	On tipper or tipper bearing, rear attachments	
<b>Drive and steering</b>		
Drive	Infinitely variable hydrostatic drive, electronically controlled, with two drive modes switchable under load	
Drive options i.a.	Driver-engaged all-wheel drive, differential lock at the rear, mechanical crawler gear	
Speed in transport mode	0–62 km/h, infinitely variable	
Speed in work mode	0–25 km/h, infinitely variable	
Steering	Front-wheel steering; optional all-wheel steering	
Tank capacity	67 litres	
Brake system	Dual-circuit hydraulic brake system, disc brakes front/rear, hydrostatic ABS acting on all four wheels; mechanical parking brake acting on the rear axle	
<b>Load values</b>		
GVW	6,0 t	
Unladen weight*	from 2.8 t (implement carrier, depending on equipment)	
Payload**	up to 3.2 t (implement carrier, depending on equipment)	

\*Without optional equipment or additional attachments/superstructures

\*\*Optional equipment and attachments/superstructures reduce the payload



### For even more efficient working: Optional equipment for your Multicar M29

For example all-wheel steering and air conditioning, trailer coupling or reversible fan and many more practical details. Please ask your Hako-Sales and Service Partner.

	Multicar M29 T	Multicar M29 C
<b>Driving characteristics</b>		
Chassis	Comfortably suspended chassis with coil springs, hydraulic vibration dampers and additional rubber springs	
Frame	Welded lead frame; bent and cranked at the front section to enable easy entering	Welded lead frame, bent and cranked at the front section to enable easy entering; feed-through option for a suction hose (in the middle, e.g. mowing/suction combination)
Axles	Rigid axles, guided on trailing arms and Panhard rod at the front and on wishbones and trailing arms at the rear, stabiliser at the rear	
Front axle	Steering axle, optional steering drive axle	
Rear axle	Drive axle, optional steering drive axle, optional with driver-engaged differential lock	
Tyres	225/75 R16 C M+S	
Cabin	Space-frame full-comfort cabin with special high-strength profiles and plastic panelling, optional heated windscreen	

Form, colour and design are subject to change in favour of further technical development. Pictures may show optional equipment.

Dimensions according to VO (EU) No. 1230/2012, depending on equipment



# Hako

Clean ahead



24  
7

### **Hako: Environmentally friendly right from the start**

It is our legacy to leave behind a clean planet. That is why resources-, environmental- and climate protection characterise each and every process at Hako which has been certified by independent institutions. Learn more about our ongoing commitment at [www.hako.com](http://www.hako.com).

### **Everywhere and always close by**

Our efficient sales & service network guarantees close proximity and rapid help.

### **Cleanliness combined with safety**

Our machines meet the highest standards. Reliable quality "Made by Hako".

### **Buying, leasing, renting**

We offer you a wide range of attractive individual financing and procurement options.

### **We are available 24/7**

Hako's spare part express and on-call service guarantees best possible availability

BLUECOMPETENCE

Alliance Member

Partner of the Engineering Industry Sustainability Initiative



Hako GmbH  
Head Office  
Hamburger Str. 209-239  
23843 Bad Oldesloe  
Tel. +49(0)4531-806 0  
[info@hako.com](mailto:info@hako.com)  
[www.hako.com](http://www.hako.com)